







Group:	2500-2800	Notes:
Form:	SP1011	Refer to SP1011 -DWG for major component drawing.
Date:	July 18, 2018	Refer to TSB-3009 for hardware kit breakdown.
File:	Alternator Parts List Section	







Component View	Front Housing Spacer, bearing, retainer	Rotor	Rear Housing, bearing	Stator	Rectifier, Positive	Brush Box
						
Model	1	2	3	4	5	6*
Sales # 2302AA A0012302AA	A014079719S	A020079713S	A012079718S	A022101040S	A051101902S	A009104173S
Sales # 2302JB A0012302JB	A014079009S	A020079713S	A012079718S	A022101040S	A051101902S	A009104173S
Sales # 2500LC A0012500LC	A014079009S	A020101982S	A011101987S	A022100195S	A051101902S	A009104174S
Sales # 2502LC A0012502LC	A014079009S	A020101982S	A011101987S	A022100195S	A051101902S	A009104174S
Sales # 2505LC A0012505LC	A014079009S	A020101982S	A011102060S	A022100195S	A051101902S	A009104174S
Sales # 2509JB A0012509JB	A014079719S	A020079575S	A012079718S	A022101040S	A051095430S**	A009104173S
Sales # 2511AA A0012511AA	A014079009S	A020079575S	A011095000S	A022101036S	A051100396S**	A009104173S
Sales # 2511JB A0012511JB	A014079009S	A020079575S	A011095000S	A022101036S	A051100396S**	A009104173S
A0012513LC	A014079009S	A020101982S	A011101987S	A022100195S	A051101902S	A009104174S
Sales # 2526LC A0012526LC	A014079009S	A020101982S	A011101987S	A022100195S	A051101902S	A009104174S
Sales # 2670LC A0012670LC	A014079009S	A020101982S	A011101987S	A022101043S	A051101902S	A009104174S
Sales # 2676LC A0012676LC	A014079009S	A020101982S	A011101987S	A022101043S	A051101902S	A009104174S

\*\* Positive and Negative Assy is one piece.

\* See SP1011-DWG for details on items.

Important: The information contained in this bulletin is intended for use by trained, professional technicians who have the proper tools, equipment, and training to perform the required maintenance described above. This information is NOT intended for 'do-it-yourselfers', and you should not assume that this information applies to your equipment. If you have any questions regarding this information please visit our website at [www.prestolite.com](http://www.prestolite.com), or contact our technical service department at:

Group:	2500-2800	Notes:
Form:	SP1011	Refer to SP1011 -DWG for major component drawing.
Date:	July 18, 2018	Refer to TSB-3009 for hardware kit breakdown.
File:	Alternator Parts List Section	








Component View	Front Housing Spacer, bearing, retainer	Rotor	Rear Housing, bearing	Stator	Rectifier, Positive	Brush Box
						
Model	1	2	3	4	5	6*
Sales # 2700LC A0012700LC	A014079009S	A020101982S	A011101987S	A022101043S	A051101902S	A009104174S
Sales # 2702LC A0012702LC	A014079009S	A020101982S	A011101987S	A022101043S	A051101902S	A009104174S
A0012706LC	A014079009S	A020101982S	A011102060S	A022101043S	A051101902S	A009104174S
Sales # 2713LC A0012713LC	A014079009S	A020101982S	A011102060S	A022101043S	A051101902S	A009104174S
Sales # 2800LC A0012800LC	A014079009S	A020101991S	A011101993S	A022097078S	N/A	A009104174S
Sales # 2802LC A0012802LC	A014079009S	A020101991S	A011101993S	A022097078S	N/A	A009104174S
Sales # 2805LC A0012805LC	A014079009S	A020101991S	A011101993S	A022097561S	N/A	A009104174S
Sales # 2807LC A0012807LC	A014079009S	A020101991S	A011101993S	A022097561S	N/A	A009104174S
Sales # 2808LC A0012808LC	A014079009S	A020101991S	A011102071S	A022097561S	N/A	A009104174S
A0012813LC	A014079009S	A020101991S	A011101993S	A022097561S	N/A	A009104174S
A0012819LC	A014079009S	A020101991S	A011102071S	A022097078S	N/A	A009104174S
Sales # 2824LC A0012824LC	A014079009S	A020101991S	A011102176S	A022097078S	N/A	A009104173S
Sales # 2825LC A0012825LC	A014079009S	A020101991S	A011102176S	A022097078S	N/A	A009104173S
A0012913LC	A014079009S	A020101991S	A011101993S	A022097078S	N/A	A009101711S


**\*\* Positive and Negative Assy is one piece.**

\* See SP1011-DWG for details on items.

Important: The information contained in this bulletin is intended for use by trained, professional technicians who have the proper tools, equipment, and training to perform the required maintenance described above. This information is NOT intended for 'do-it-yourselfers', and you should not assume that this information applies to your equipment. If you have any questions regarding this information please visit our website at [www.prestolite.com](http://www.prestolite.com), or contact our technical service department at:

Group:	2500-2800	Notes:
Form:	SP1011	Refer to SP1011-DWG for major component drawing.
Date:	July 18, 2018	Refer to TSB-3009 for hardware kit breakdown.
File:	Alternator Parts List Section	







Component View	Fan	Regulator or Cover	Rectifier, Negative	Solid Leadframe Rectifier	Overhaul Kit Bearings, slip ring, O-ring, brush holder	Hardware Kit	Capacitor Assembly
							
Model	7	8	9	10			
Sales # 2302AA A0012302AA	A041079035S	A038100265S	A051101903S	N/A	K183104746S	K212104780S	A031096545S
Sales # 2302JB A0012302JB	A041079035S	R240097050S	A051101903S	N/A	K183104746S	K212104780S	A031096545S
Sales # 2500LC A0012500LC	A041079035S	R213103450S	A051101903S	N/A	K183104747S	K212104780S	A031096545S
Sales # 2502LC A0012502LC	A041079035S	R213103450S	A051101903S	N/A	K183104747S	K212104780S	A031096545S
Sales # 2505LC A0012505LC	A041099599S	R240102886S	A051101903S	N/A	K183104747S	K212104780S	N/A
Sales # 2509JB A0012509JB	A041079035S	R240099400S	A051095430S**	N/A	K183104746S	K212104780S	A031096545S
Sales # 2511AA A0012511AA	A041079035S	A038100265S	A051100396S**	N/A	K183104746S	K212104780S	A031096545S
Sales # 2511JB A0012511JB	A041079035S	R240099400S	A051100396S**	N/A	K183104746S	K212104780S	A031096545S
A0012513LC	A041079035S	R213103450S	A051101903S	N/A	K183104747S	K212104780S	A031096545S
Sales # 2526LC A0012526LC	A041079035S	R213103450S	A051101903S	N/A	K183104747S	K212104780S	A031096545S
Sales # 2670LC	A041079035S	R213103450S	A051101903S	N/A	K183104747S	K212104780S	A031096545S
Sales # 2676LC A0012676LC	A041079035S	R213103450S	A051101903S	N/A	K183104747S	K212104780S	A031096545S


Component View	Trio
	
Model	
Sales # 2302JB A0012302JB	A051079027S
Sales # 2509JB A0012509JB	A051079027S
Sales # 2511JB A0012511JB	A051079027S

\*\* Positive and Negative Assy is one piece.

Important: The information contained in this bulletin is intended for use by trained, professional technicians who have the proper tools, equipment, and training to perform the required maintenance described above. This information is NOT intended for 'do-it-yourselfers', and you should not assume that this information applies to your equipment. If you have any questions regarding this information please visit our website at [www.prestolite.com](http://www.prestolite.com), or contact our technical service department at:

Group:	2500-2800	Notes:
Form:	SP1011	Refer to SP1011-DWG for major component drawing.
Date:	July 18, 2018	Refer to TSB-3009 for hardware kit breakdown.
File:	Alternator Parts List Section	

Component View	Fan	Regulator or Cover	Rectifier, Negative	Solid Leadframe Rectifier	Overhaul Kit Bearings, slip ring, O-ring, brush holder	Hardware Kit	Capacitor Assembly
							
Model	7	8	9	10			
Sales # 2700LC A0012700LC	A041079035S	R213103450S	A051101903S	N/A	K183104747S	K212104780S	A031096545S
Sales # 2702LC A0012702LC	A041079035S	R213103450S	A051101903S	N/A	K183104747S	K212104780S	A031096545S
A0012706LC	A041099599S	R240102886S	A051101903S	N/A	K183104747S	K212104780S	N/A
Sales # 2713LC A0012713LC	A041099599S	R240102886S	A051101903S	N/A	K183104747S	K212104780S	N/A
Sales# 2800LC A0012800LC	A041079035S	R213103450S	N/A	A051105220S	K183104747S	K212104780S	A031105229S
Sales # 2802LC A0012802LC	A041079035S	R213103450S	N/A	A051105220S	K183104747S	K212104780S	A031105229S
Sales # 2805LC A0012805LC	A041079035S	R213103450S	N/A	A051105220S	K183104747S	K212104780S	A031105229S
Sales # 2807LC A0012807LC	A041079035S	R213103450S	N/A	A051105220S	K183104747S	K212104780S	A031105229S
Sales # 2808LC A0012808LC	A041099599S	R240102886S	N/A	A051105220S	K183104747S	K212104780S	N/A
A0012813LC	A041079035S	R213103450S	N/A	A051105220S	K183104747S	K212104780S	A031105229S
A0012819LC	A041099599S	R240102886S	N/A	A051105220S	K183104747S	K212104780S	N/A
Sales # 2824LC A0012824LC	A041079035S	R240103726S	N/A	A051105220S	K183104747S	K212104780S	A031105229S
Sales # 2825LC A0012825LC	A041079035S	R240103726S	N/A	A051105220S	K183104747S	K212104780S	A031105229S
A0012913LC	A041079035S	R213103450S	N/A	A051105220S	K183104747S	K212104780S	A031105229S

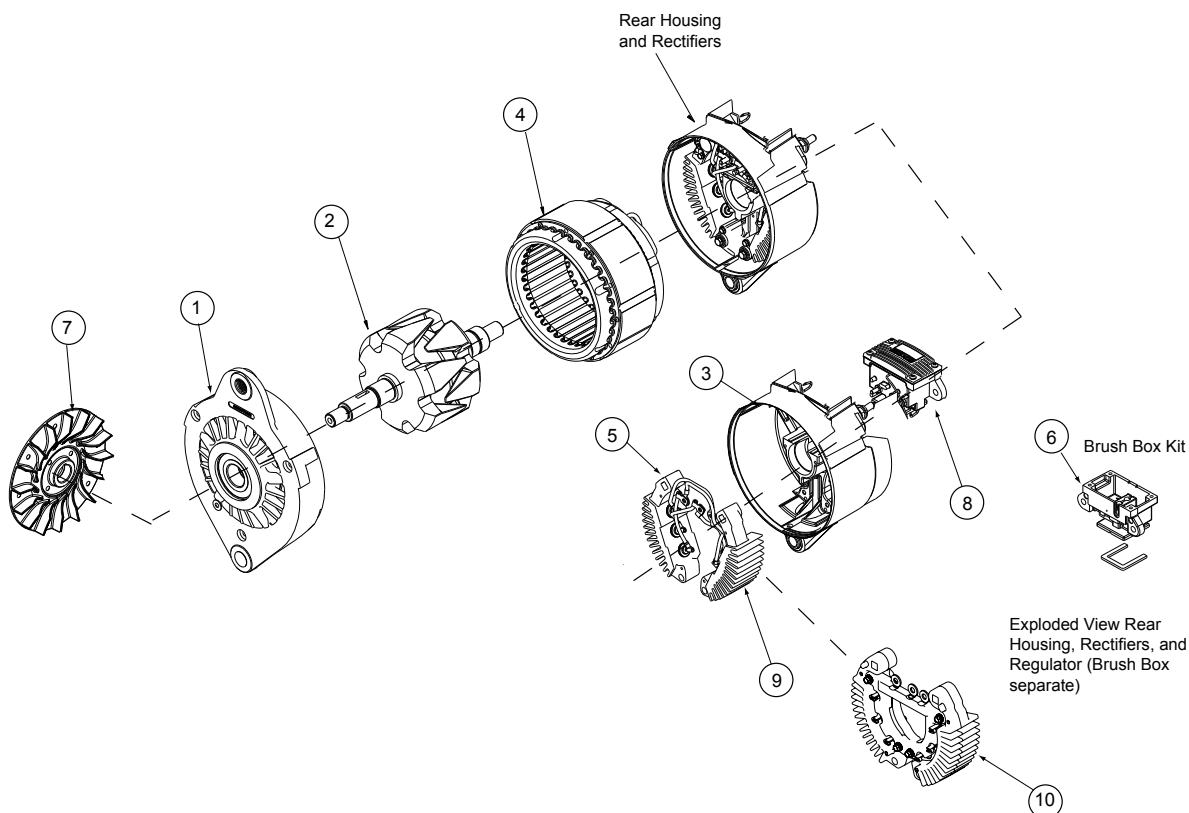
Component View	Trio
	
Model	
Sales # 2302JB A0012302JB	A051079027S
Sales # 2509JB A0012509JB	A051079027S
Sales # 2511JB A0012511JB	A051079027S

**\*\* Positive and Negative Assy is one piece.**

Important: The information contained in this bulletin is intended for use by trained, professional technicians who have the proper tools, equipment, and training to perform the required maintenance described above. This information is NOT intended for 'do-it-yourselfers', and you should not assume that this information applies to your equipment. If you have any questions regarding this information please visit our website at [www.prestolite.com](http://www.prestolite.com), or contact our technical service department at:

Group:	2500-2800 J180	Notes:
Form:	SP1011-DWG	Refer to SP1011-2500-2800 for parts breakdown.
Date:	July 7, 2017	Refer to TSB-3009 for hardware kit breakdown.
File:	Alternator Parts List Section	

### 2000 Series J180 Mount



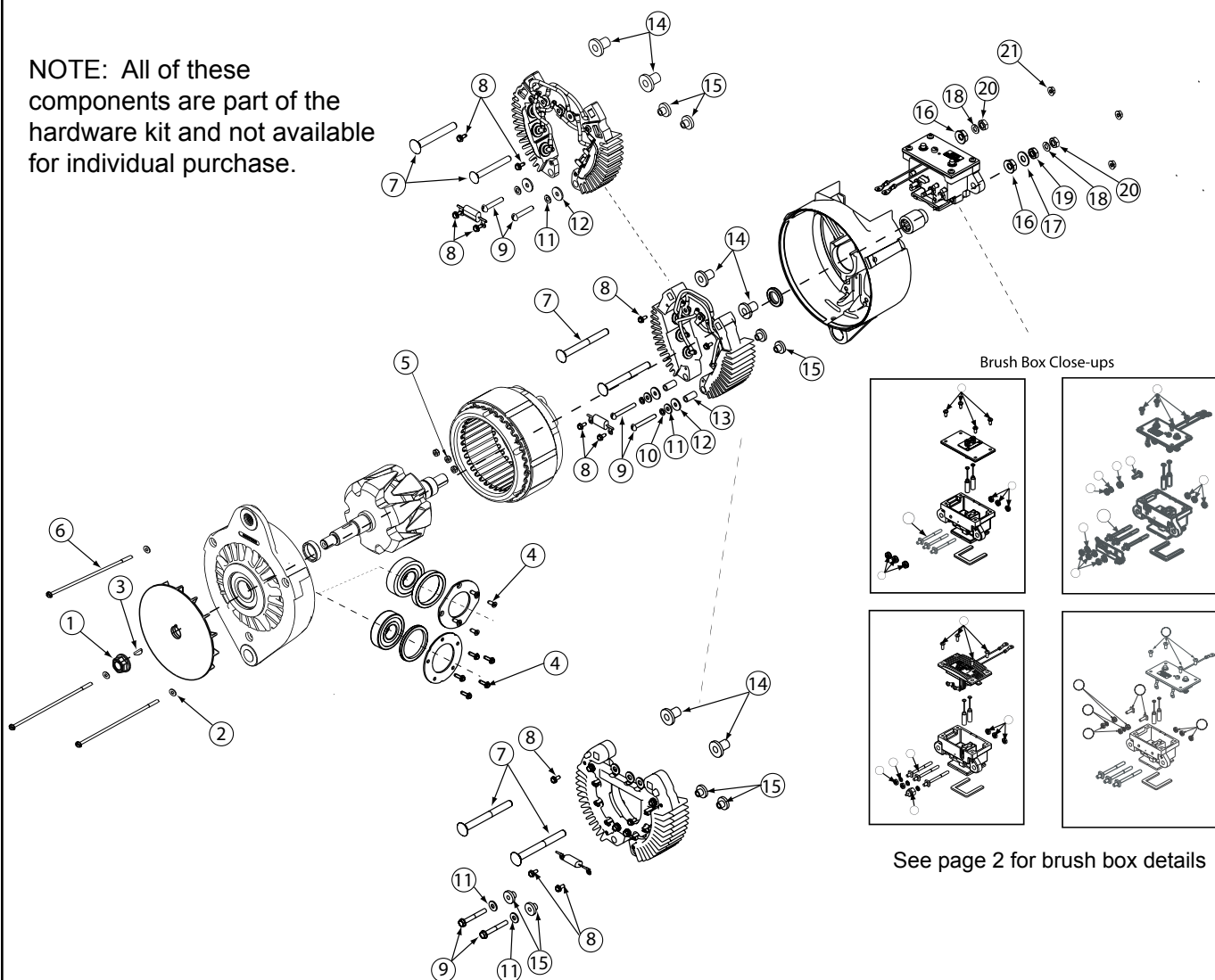
See TSB-3009  
for Hardware Kit  
breakdown

**Important:** The information contained in this bulletin is intended for use by trained, professional technicians who have the proper tools, equipment, and training to perform the required maintenance described above. This information is NOT intended for 'do-it-yourselfers', and you should not assume that this information applies to your equipment. If you have any questions regarding this information please visit our website at [www.prestolite.com](http://www.prestolite.com), or contact our technical service department at:

Source: Leece-Neville Heavy Duty Systems Division - Arcade, NY USA  
Date: JULY 7, 2017  
Bulletin No: TSB-3009  
Models: 2500 and 2800 Series  
Subject: Hardware Kit for series 2500 and 2800 alternators K212104780S

## 2500, 2800 Series J-180 Mount

NOTE: All of these components are part of the hardware kit and not available for individual purchase.



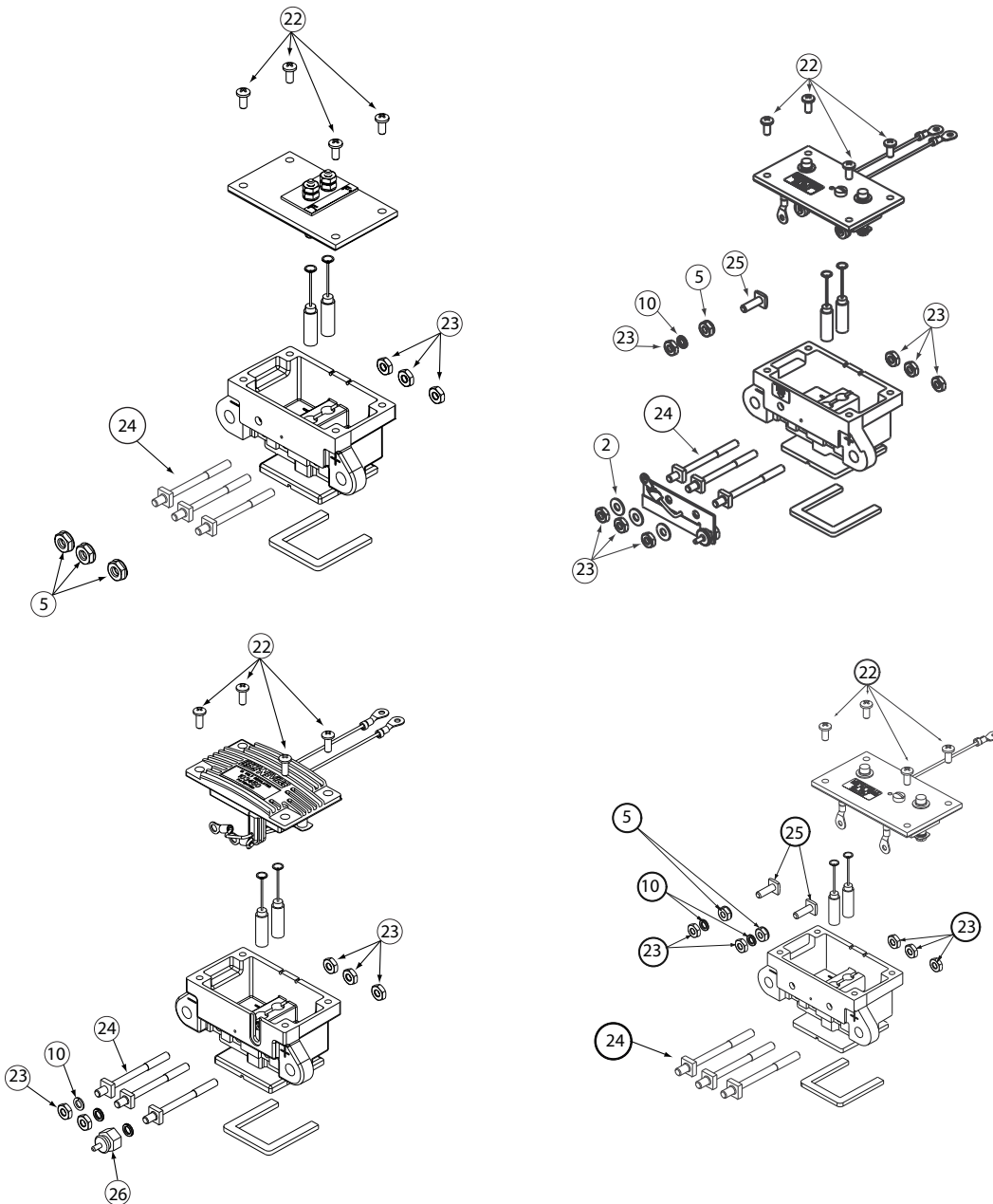
See page 2 for brush box details

Important: The information contained in this bulletin is intended for use by trained, professional technicians who have the proper tools, equipment, and training to perform the required maintenance described above. This information is NOT intended for 'do-it-yourselfers'; and you should not assume that this information applies to your equipment. If you have any questions regarding this information please visit our website at [www.prestolite.com](http://www.prestolite.com), or contact our technical service department at:

Date: JULY 7, 2017

Bulletin No: TSB-3009

**Note:** All of these components are part of the hardware kit and not available for individual purchase.



**Important:** The information contained in this bulletin is intended for use by trained, professional technicians who have the proper tools, equipment, and training to perform the required maintenance described above. This information is NOT intended for 'do-it-yourselfers', and you should not assume that this information applies to your equipment. If you have any questions regarding this information please visit our website at [www.prestolite.com](http://www.prestolite.com), or contact our technical service department at:



Date: JULY 7, 2017

Bulletin No: TSB-3009

Description	Qty.	Key	Where used
NUT, 5/8-18, LOCK	1	1	Fan Nut
WASHER, FLAT#10	6	2	Thru-Bolt flat washer
KEY, WOODRUFF #8	1	3	Shaft key
SCREW, THREAD FORMING	4	4	Front housing retainer plate holding screw
SCREW TRHEAD FORMING	5	4	Front housing retainer plate holding screw
NUT	6	5	Internal stator nuts to AC-taps
THROUGH BOLT	3	6	Thru-Bolt Hold Alternator Together
SCREW TERMINAL 1/4-20	1	7	Positive or Negative Output Studs
SCREW TERMINAL 1/4-20	1	7	Positive or Negative Output Studs
SCREW TERMINAL 1/4-20	1	7	Positive or Negative Output Studs
SCREW TERMINAL 1/4-20	1	7	Positive or Negative Output Studs
SCREW TERMINAL 1/4-20	1	7	Positive or Negative Output Studs
SCREW TERMINAL 5/16-18	2	7	Positive or Negative Output Studs
SCREW TERMINAL 5/16-18	2	7	Positive or Negative Output Studs
SCREW TERMINAL 5/16-18	1	7	Positive or Negative Output Studs
SCREW, TAP #6-32X11/32	4	8	Hold regulator sense leads and capacitor to rectifier rings
SCREW #10-32 X 1 1/2	2	9	Holds rectifier ring to rear housing
SCREW, #10 THD FORM	2	9	Holds rectifier ring to rear housing
WASHER, LOCK #10	5	10	Lock washer for bolt (Key 9)
WASHER, FLAT #10	2	11	Flat washer for bolt (Key 9)
WASHER INSULATING	2	12	Insulates bolt (Key 9) from rectifier rings
BUSHING, INSULATING	2	13	Insulates bolt (Key 9) from rectifier rings
BUSHING, INSULATING	2	14	Insulates output studs and rectifier rings from rear housing
BUSHING, INSULATING	1	14	Insulates output studs and rectifier rings from rear housing
BUSHING, INSULATING	2	15	Insulates rectifier ring from rear housing
NUT, CON LOCK, 5/16-18	2	16	Holds positive and negative studs into rear housing
NUT, CON LOCK, 1/4-20	2	16	Holds positive and negative studs into rear housing
WASHER GUARD, 5/16	1	17	Washer used on negative output stud
WASHER GUARD, 1/4	1	17	Washer used on negative output stud
WASHER, LOCK 5/16	2	18	Lock washer for positive and negative output stud
WASHER, LOCK 1/4	2	18	Lock washer for positive and negative output stud
HEX NUT, 5/16-18 UNC	1	19	Jam nut used on negative output stud
HEX NUT, 1/4-20 UNC	3	19	Nut used on positive or negative studs
HEX NUT, 5/16-18 UNC	2	20	Nut used to attach customer cables to alternator output studs

Important: The information contained in this bulletin is intended for use by trained, professional technicians who have the proper tools, equipment, and training to perform the required maintenance described above. This information is NOT intended for 'do-it-yourselfers'; and you should not assume that this information applies to your equipment. If you have any questions regarding this information please visit our website at [www.prestolite.com](http://www.prestolite.com), or contact our technical service department at:



Date: JULY 7, 2017

Bulletin No: TSB-3009

Description	Qty.	Key	Where used
NUT, #10-32 FLANGE LOCK	3	21	Thru Bolts nuts
SCREW #8-32 X 3/8	4	22	Regulator attachment screws
SCREW #8-32 X 7/16	4	22	Regulator attachment screws
HEX NUT, #10-32 UNF	7	23	AC Tap Nuts/ REGULATOR HARDWARE
STUD TERMINAL	3	24	AC Studs
SCREW, #10-32 X 5/8, SQ HD	2	25	Ignition stud/ REMOTE SENCE STUD
SCREW R PIN	1	26	AC TERMINAL

Important: The information contained in this bulletin is intended for use by trained, professional technicians who have the proper tools, equipment, and training to perform the required maintenance described above. This information is NOT intended for 'do-it-yourselfers'; and you should not assume that this information applies to your equipment. If you have any questions regarding this information please visit our website at [www.prestolite.com](http://www.prestolite.com), or contact our technical service department at: